

### Description



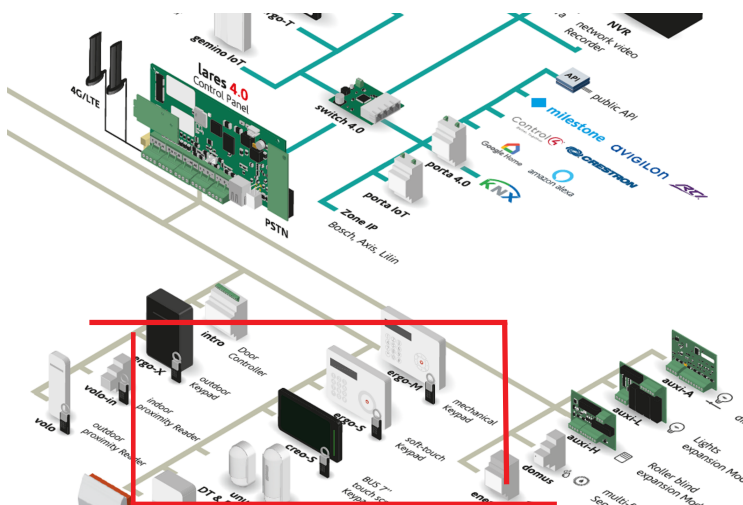
code KSI2100050.302

The **creo-S** keypad is dedicated to managing the **Security** functions of the lares 4.0 system. It is suitable for commercial, industrial and residential environments and provides the end user with complete control over the lares 4.0 control panel.

The new **creo-S** keypad is the first touchscreen BUS keypad designed and manufactured by Ksenia Security, with the minimalist design that characterizes all Ksenia products.

The **creo-S** keypad indeed features a 7-inch display with a resolution of 1024x600 pixels, utilizing IPS technology. This ensures excellent viewing angles and superior visual quality.

The capacitive touchscreen provides precise and immediate touch response and integrates an RFID area for reading Ksenia RFID security keys. An RGB LED for status signaling, a buzzer, and two terminals configurable as Input (NC, NO, or balanced) or Output (OC, 500 mA max) complete the device's features.



The **creo-S** keypad offers advanced protection against tampering attempts with features such as anti-removal protection to detect unauthorized removal of the device, temporary lockout after incorrect PIN entry (max 3 attempts).

Its IP30 protection rating ensures safe operation in indoor environments with an operating temperature range of -10°C to +55°C, guaranteeing reliability and optimal performance within this range.

The **creo-S** keypad connects to the KS-BUS of the lares 4.0 and is fully programmable remotely. Updates can be managed automatically via the Ksenia SecureWeb cloud connection or manually through the Web interface.

Wall installation is extremely simple thanks to the provided plastic mounting support.

The **creo-S** keypad allows end users to intuitively manage the system, monitor the status of partitions and sensors, and customize certain features useful for the system management.

### Compliance

Europe - CE, RoHS





Technical characteristics

- |                          |  |
|--------------------------|--|
| • Display:               | 7" - Capacitive  |
| • Screen type:           | IPS (In-Plane Switching)   |
| • Resolution:            | 1024x600   |
| • System interface:      | KS-BUS   |
| • I/O Terminals:         | 2 - configurable as Input (NC, NO, or balanced) or Output (OC 500 mA max) (No fast contacts)   |
| • Proximity reader:      | RFID technology  |
| • Buzzer:                | Multi-tone for action feedback   |
| • Tamper protection:     | Anti-removal tamper  |
| • RGB LED / Multicolor:  | LED strip for status signaling   |
| • Adjustments:           | Backlight, volume, etc.  |
| • Power supply:          | +10V...+15V  |
| • Power consumption:     | 450 mA max with display on<br>100 mA max with display off  |
| • Mounting:              | Flat back for mounting without box (with hole for BUS cable passage). The bracket has holes for installation on a DIN 503 box or on a 60mm round box |
| • Protection rating:     | IP 30  |
| • Operating temperature: | -10°C / +55°C  |
| • Color:                 | Black  |
| • Dimensions:            | 193x128x20 mm (WxHxD)  |
| • Weight:                | 430 g  |

Why creo-S?

- Because its graphical interface has been designed to ensure extreme ease of use and provide a simple and intuitive user experience;
- the display features a dark glass effect that gives the keypad an elegant and minimal design, from which a multicolor LED clearly indicates the system status;
- because it allows authentication via both PIN code and RFID TAG key.

Benefits for the installer

- creo-S offers two I/O terminals that can be configured as input/output (NO/NC with programmable balancing);
- its wall installation is quick and easy thanks to the snap-on bracket, compatible with DIN 503 boxes;
- it comes with a removable terminal block, allowing for fast and secure wiring during installation.

Compliance

Europe - CE, RoHS



Ksenia Security SpA

Strada Provinciale Valtellino,49

63065 Ripatransone, AP, Italy

tel. +39 0735 751646 / fax +39 0735 652281

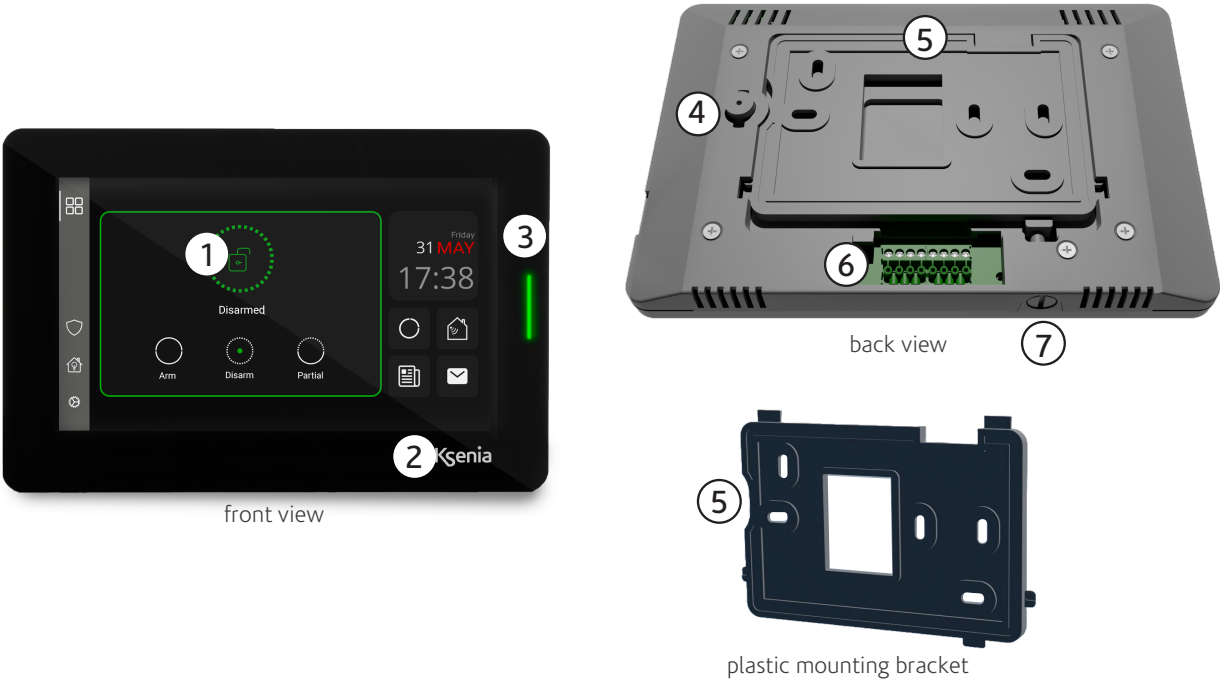
General information / [info@kseniasecurity.com](mailto:info@kseniasecurity.com)

Sales / [sales@kseniasecurity.com](mailto:sales@kseniasecurity.com)

Technical support / [helpdesk@kseniasecurity.com](mailto:helpdesk@kseniasecurity.com)

[www.kseniasecurity.com](http://www.kseniasecurity.com)

Physical description



Legend	
1	7" touchscreen display
2	Proximity reader area with RFID technology (user interaction point with RFID key/tag)
3	LED strip for status signaling
4	Anti-removal tamper
5	Plastic mounting bracket
6	KS-BUS communication terminal block + I/O terminals
7	Bracket locking screw

Quantity data						
lares 4.0 models	wls 96	16	40	40 wls	140 wls	644 wls
Maximum number of user interfaces on BUS	3	6	24	24	40	64

Compliance  
Europe - CE, RoHS

